


3.7 Laboratories with adequate equipment document

3.7.1 & 3.7.2	Laboratories with adequate equipment according to syllabi	17
	Usage of available Lab infrastructure	yes


PRINCIPAL
Rajendra Kanya Mahavidyalaya
SRKMV, Shimla-1

Physical Facilities RKMV Shimla (2023-24).

RKMV, Shimla, provides the best infrastructure and learning facilities to its staff and students for their overall growth and development. The college offers undergraduate programs in science, commerce, and the humanities. The college has an administrative block and three academic blocks: A, B, and Science. A new C block is under construction. The college has 26 classrooms, including 10 smart classrooms collectively in Arts and Science Blocks, one language lab, one e-commerce lab, one BCA lab, one IT lab, and 17 laboratories. The college has one seminar-video conferencing hall equipped with ICT facilities. All departments are equipped with Wi-Fi/LAN facilities. At present the college has an ICT enabled auditorium. The library has been partially automated since 2009 and uses the SOUL ILMS software. The college has a tribal hostel and a general hostel. The canteen facility is also available for the staff and students. Dispensary facilities for rendering first aid to the students are available within the campus. A branch of the Indian Overseas Bank is located within the campus. A multipurpose shop with photocopying, a photo studio, and an internet café facility is available on campus for the convenience of female students. Stationery in the bookshop is also available on campus. The college caters exclusively to the education of girl students from across the state of Himachal Pradesh. The Painting, Music, and Dance Departments are exclusively devoted to inculcating and nurturing the creative talent among the students. RKMV is the only government college in the state to have the dance department. They also participate in prestigious events held on Republic Day, Statehood Day, and Independence Day, etc. The language departments train the students for creative writing, debating, and declamation events.



- **Block B:**



- **Science Block :**



Ongoing Construction:

- **New Block :**



Infrastructural and Physical facilities for Teaching, Learning

❖ Library





Classroom and Departmental Overview

- **Total Number of Classrooms: 13**
- **Smart Classrooms: 5 (Lecture Halls 3, 6, 9, 12, and 13)**
- **Specialized Rooms and Departments:**
 - **Room No. 7: Painting and Applied Art Department/Classrooms**
 - **Room No. 8: Psychology Department/Classroom**
 - **Geography Lab/Classroom**
 - **Physical Education Department/Classroom**

Science Block

❖ The Science Labs: Fostering Exploration and Innovation



The science labs at the college are the cornerstones of scientific inquiry and discovery, providing students with the hands-on experience necessary to complement their theoretical knowledge. These labs, which include Zoology, Botany, Physics, and Chemistry, are equipped with the latest tools and technology, fostering an environment where curiosity thrives and learning comes to life.

Smart Classrooms:-



The Science Block at RKMV is equipped with state-of-the-art smart classrooms, designed to enhance the learning experience for students. These classrooms integrate advanced technology with traditional teaching methods, creating a dynamic and interactive educational environment.

Zoology Lab: Exploring the Animal Kingdom

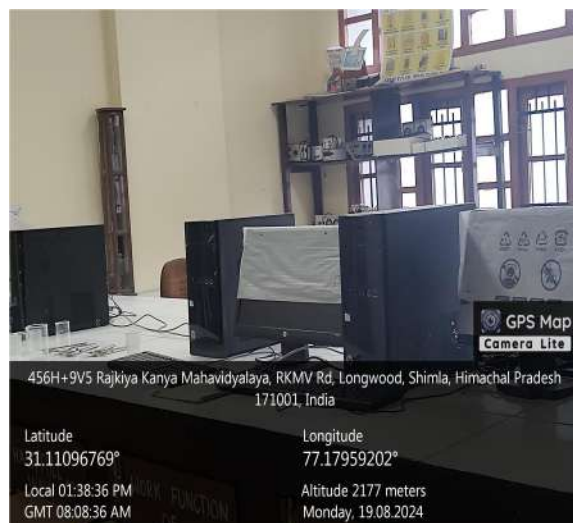




Botany Lab: Unraveling the Secrets of Plant Life



Physics Lab: Understanding the Laws of Nature



Chemistry Lab: The World of Reactions and Compounds





456H+9V5 Rajkiya Kanya Mahavidyalaya, RKMV Rd, Longwood, Shimla, Himachal Pradesh 171001, India

Latitude
31.11082946°

Longitude
77.17990028°

Local 01:26:30 PM
GMT 07:56:30 AM

Altitude 2177 meters
Monday, 19.08.2024



456H+9V5 Rajkiya Kanya Mahavidyalaya, RKMV Rd, Longwood, Shimla, Himachal Pradesh 171001, India

Latitude
31.11083728°

Longitude
77.17969974°

Local 01:27:05 PM
GMT 07:57:05 AM

Altitude 2177 meters
Monday, 19.08.2024

❖ Biotechnology and Microbiology Lab



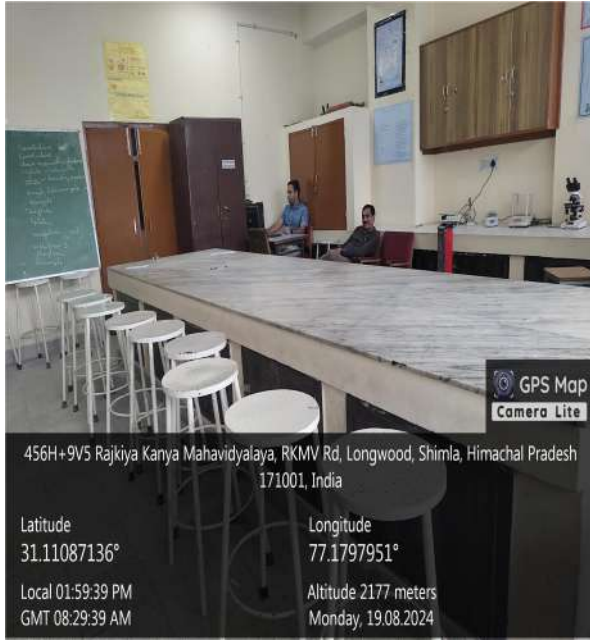
456H+6WG, Longwood, Shimla, Himachal Pradesh 171001, India

Latitude
31.11076362°

Longitude
77.17981328°

Local 01:55:45 PM
GMT 08:25:45 AM

Altitude 2190 meters
Monday, 19.08.2024



❖ Other Labs:

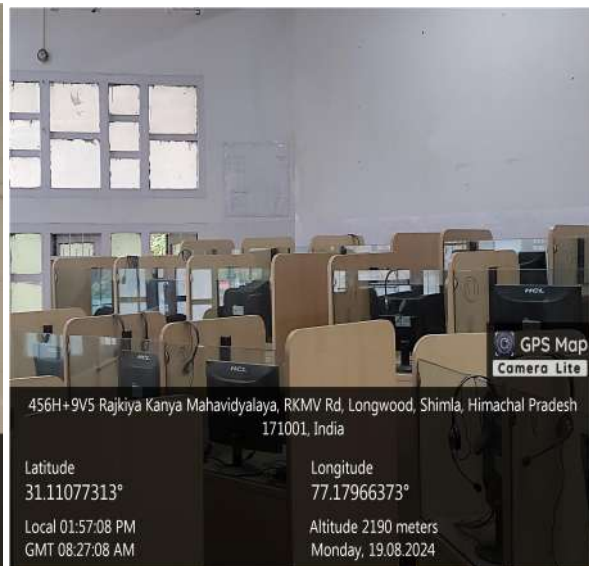
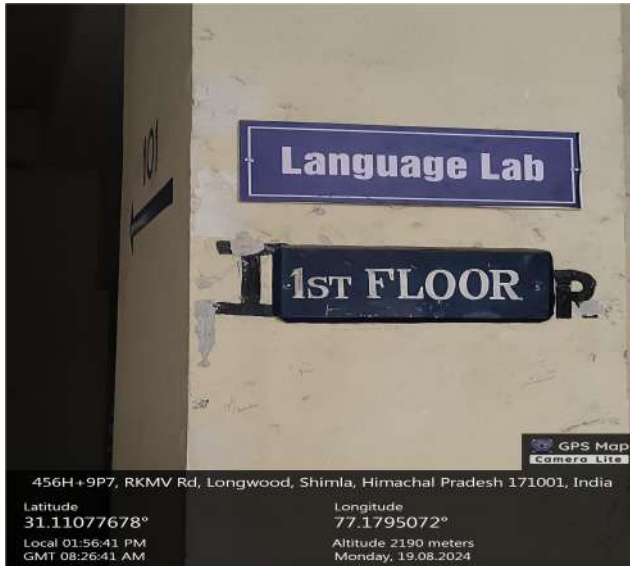
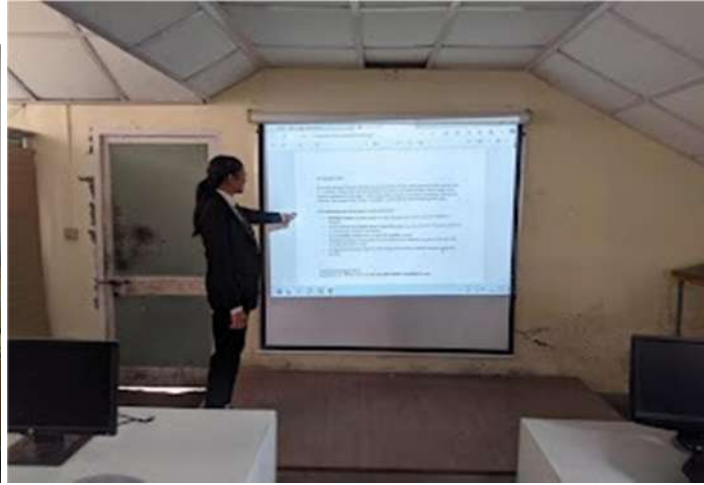
IT Lab: The Digital Frontier of Learning



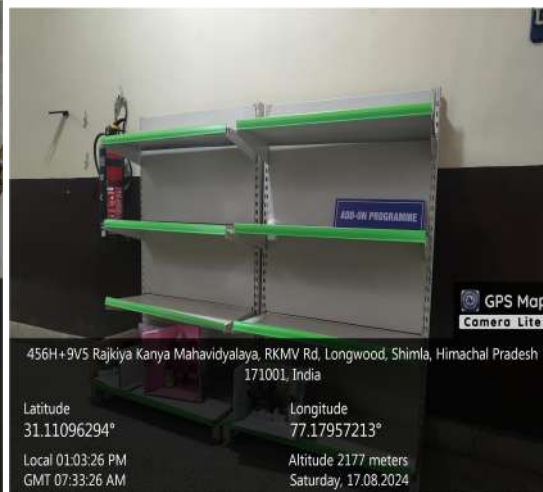
IT Lab Rajkiya Kanya Mahavidyalaya, Shimla

Session 2023-24

❖ Language Lab



❖ **Geography Lab:**



○

2. Hospitality Lab:



Hospitality and Tourism Lab

❖ Home Science: Nutrition and Health Lab





❖ Social Initiative: Chapati Preparation for Cancer Hospital Patients

Introduction: The Home Science: Nutrition and Health Lab at our college has taken a meaningful step towards contributing to society by engaging in the preparation of chapatis for cancer hospital patients. This initiative is part of the lab's broader mission to apply nutritional knowledge in ways that support community health and well-being.


PRINCIPAL
Rajkiya Kanya Mahavidyalaya
Shimla-1

